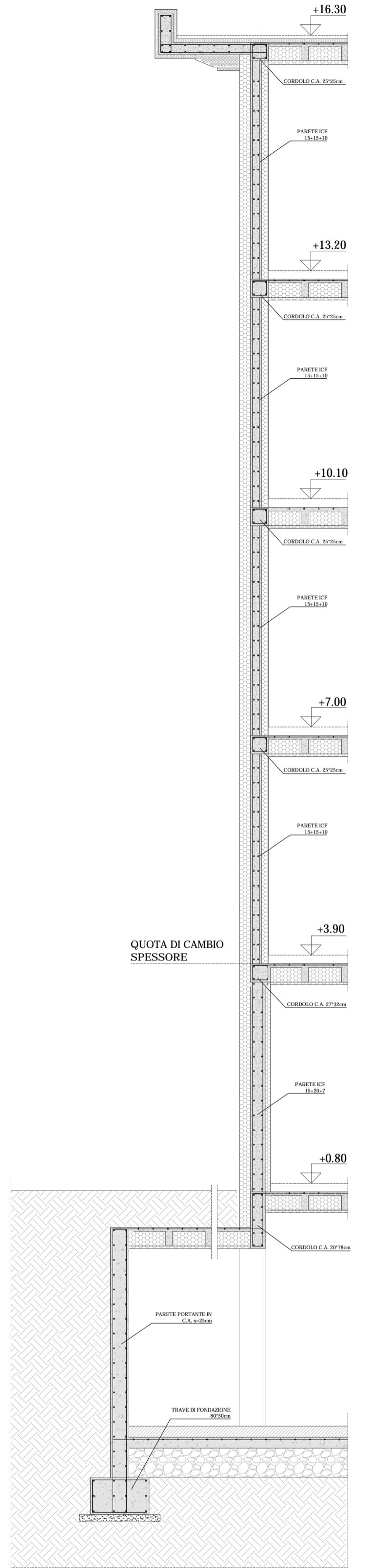


IMPALCATO PIANO PRIMO
(QUOTA 3.90m)
SCALA 1:50

LEGENDA
TIPOLOGIA STRUTTURALE

- pareti portanti in c.a. (sistema ICF) sp. 15.0+15+10.0 cm
- pareti portanti in c.a. (sistema ICF) sp. 7.5+15+7.5 cm
- pareti, pilastri e setti in c.a.



SEZIONE COMPLESSIVA
SCALA 1:50

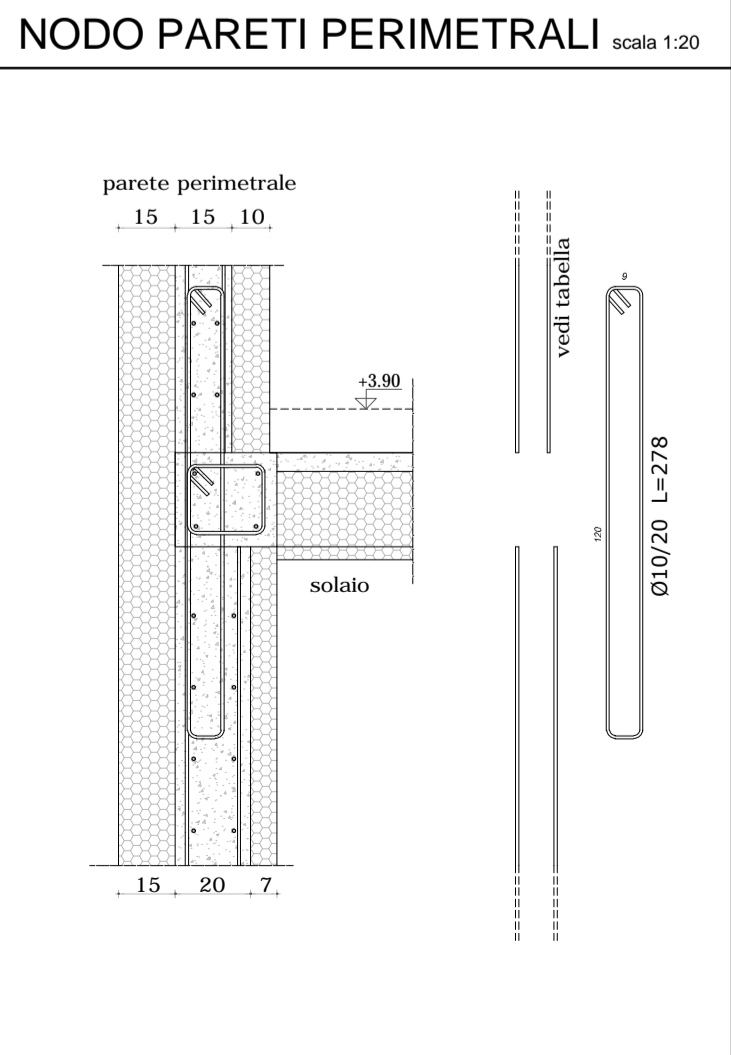
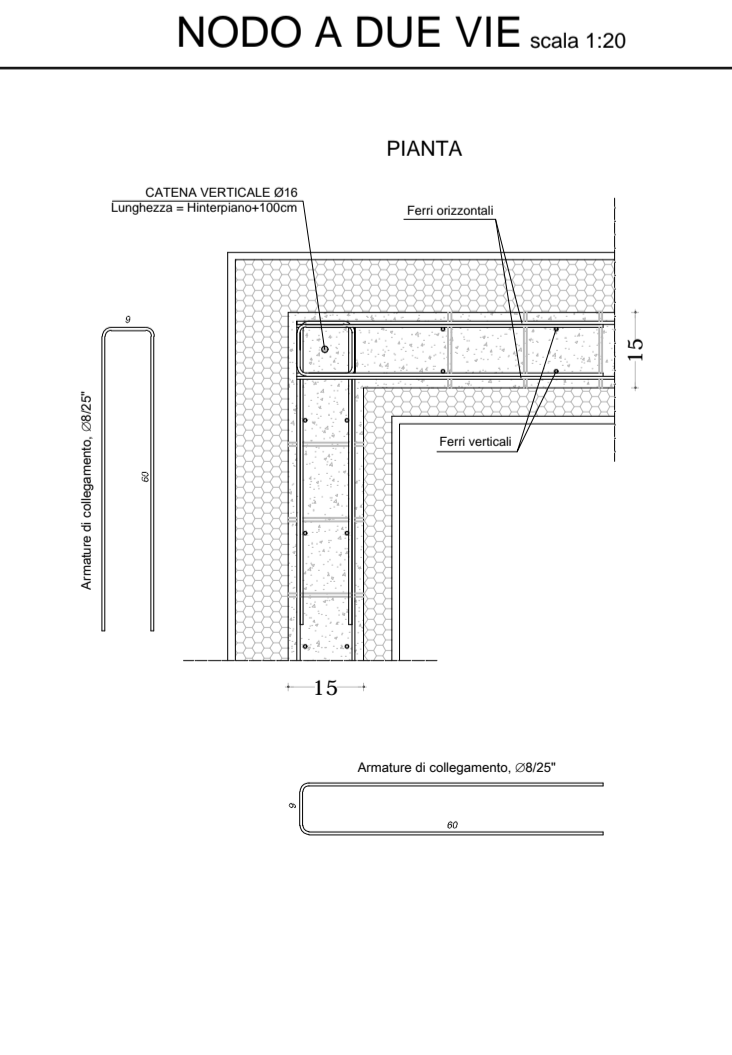
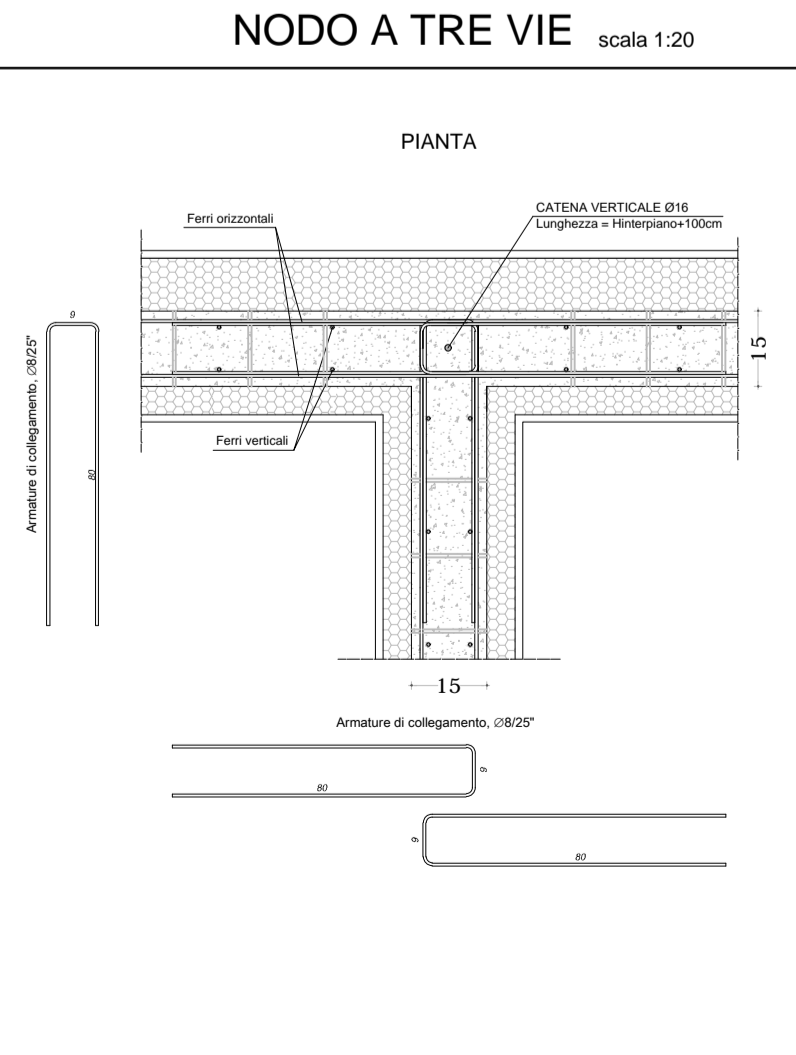
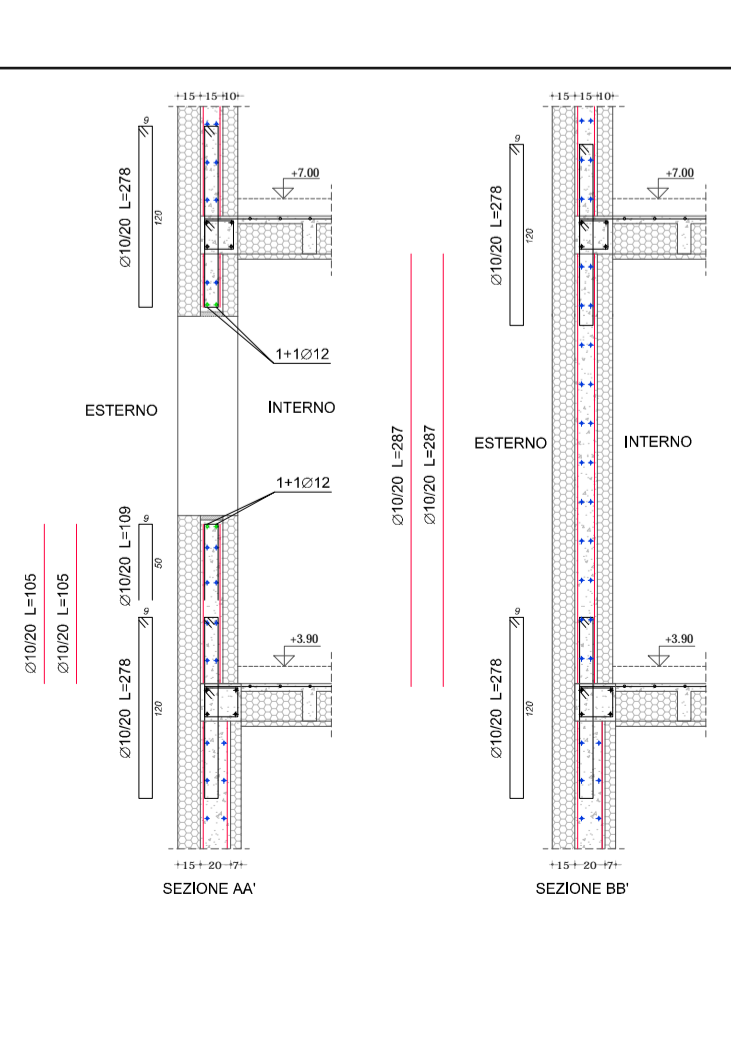
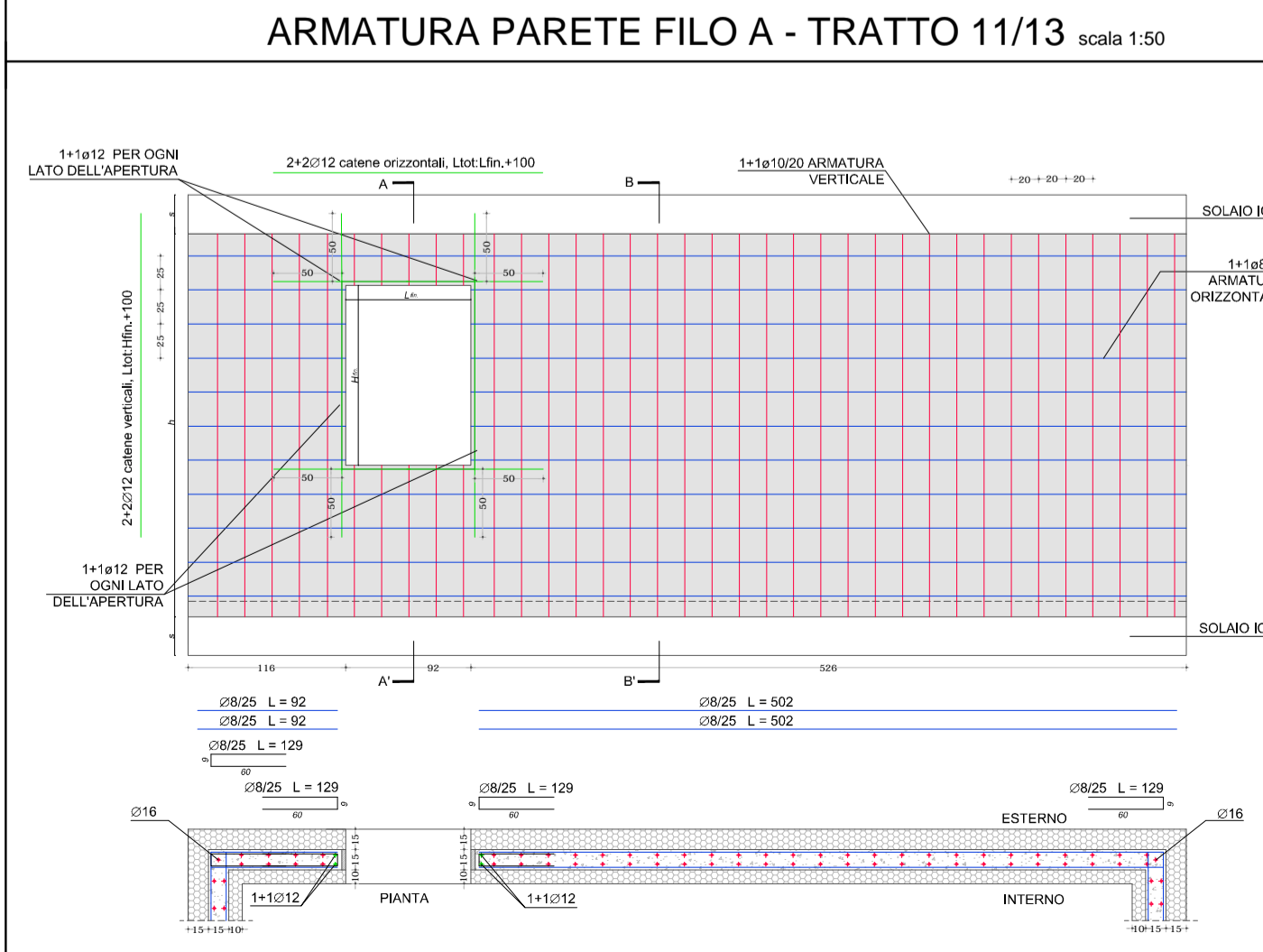


TABELLA ARMATURA
PARETI ICF 15.0+15+10.0

PIANO PRIMO - PIANO SEC.

FILO	TRATTO	ARM.ORIZZ.	ARM.VERT.
1	D - G	1+1Ø10/25"	1+1Ø12/20"
3	G - H	1+1Ø8/25"	1+1Ø10/20"
4	B - D	1+1Ø8/25"	1+1Ø10/20"
6	G - H	1+1Ø8/25"	1+1Ø10/20"
10	G - H	1+1Ø10/25"	1+1Ø12/20"
11	A - B	1+1Ø8/25"	1+1Ø10/20"
12	C - H	1+1Ø10/25"	1+1Ø12/20"
13	A - C	1+1Ø8/25"	1+1Ø10/20"

FILO	TRATTO	ARM.ORIZZ.	ARM.VERT.
A	11 - 13	1+1Ø8/25"	1+1Ø10/20"
B	4 - 11	1+1Ø8/25"	1+1Ø10/20"
C	12 - 13	1+1Ø8/25"	1+1Ø10/20"
D	1 - 4	1+1Ø8/25"	1+1Ø10/20"
D	1 - 3	1+1Ø8/25"	1+1Ø10/20"
H	3 - 6	1+1Ø8/25"	1+1Ø10/20"
H	10 - 12	1+1Ø8/25"	1+1Ø10/20"

